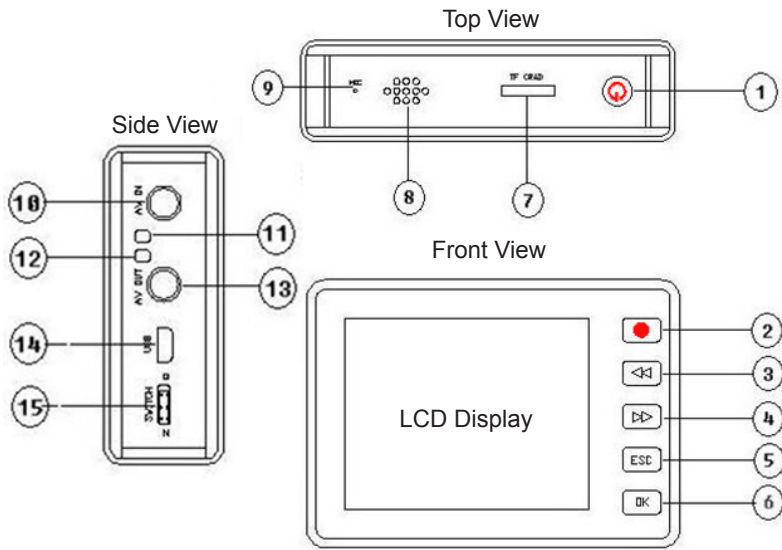


# Quick Start Guide: TC 7

## 7 m Telescopic Camera Lance



### Mini DVR Controls

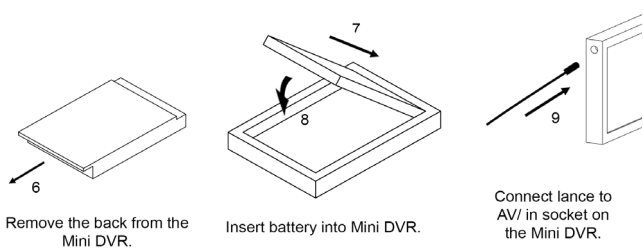
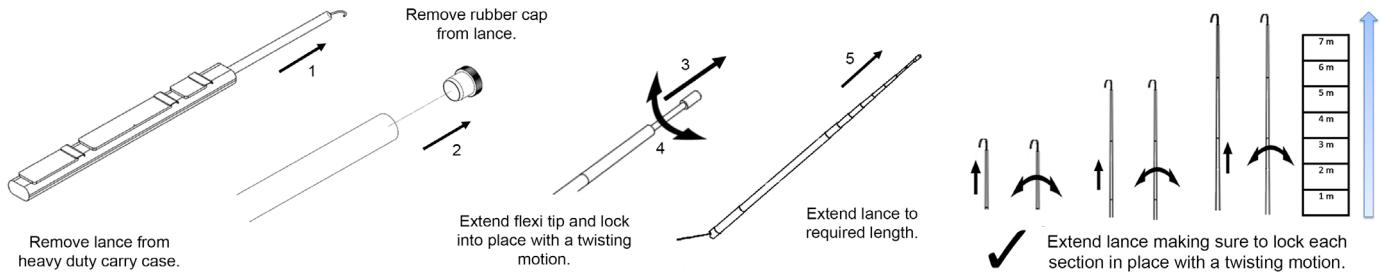


Reference	Description
1	Power Button / Camera Button
2	Video Record Button
3	Rewind Button (menu back)
4	Fast Forward Button (menu forward)
5	ESC Button
6	Ok/ Enter Button
7	Micro SD® Card Slot
8	Speaker (Not in use with TC 7)
9	Microphone (Not supplied with TC 7)
10	Video Feed Connector (AV/ in)
11	Charging Indicator
12	System Status Indicator
13	AV Output (AV/ out)
14	USB Port
15	Mode Switch ("Q" standby / "N" On)



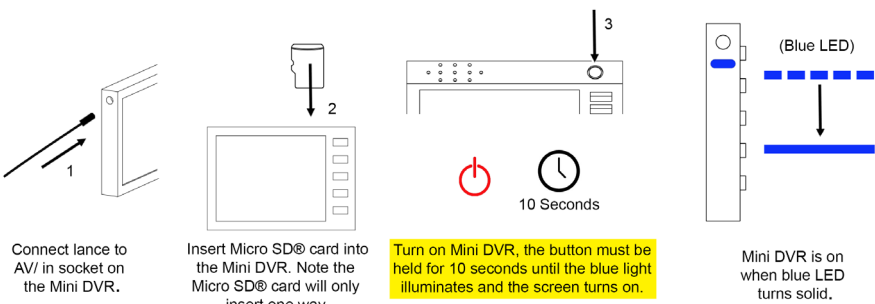
**To turn on Mini DVR, ensure the mode switch (standby) is set to position "N", the power button must then be held for 10 seconds until the blue light illuminates and the screen turns on.**

### TC 7 Lance Assembly Guide



**DO NOT SUBMERGE THE CAMERA HEAD IN LIQUID / WATER.**

### TC 7 Mini DVR Setup Guide

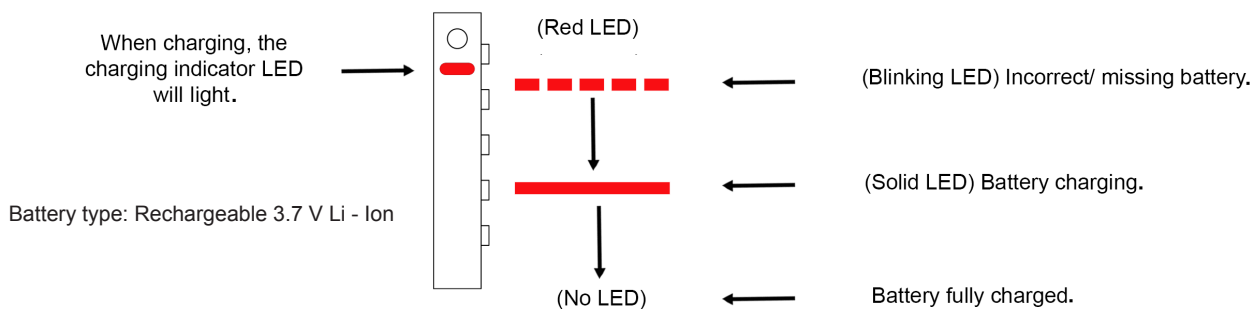
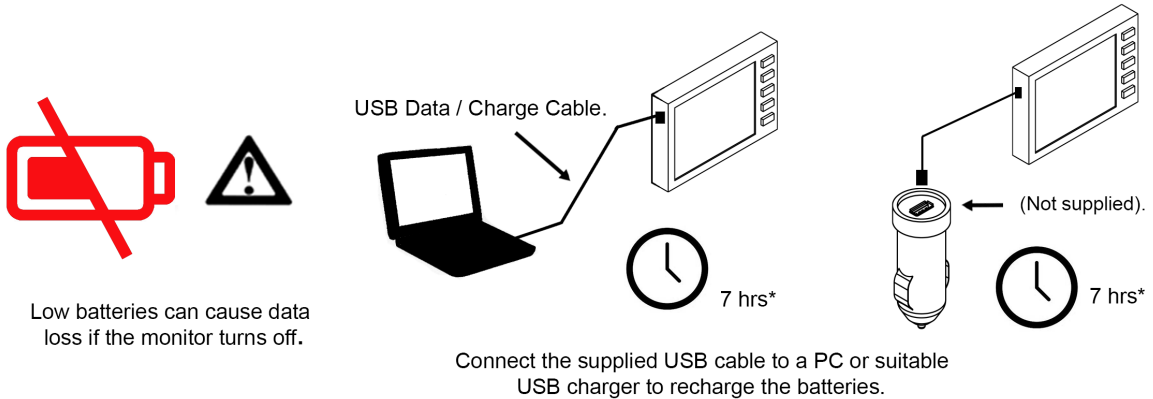


To begin a recording simply press the record button on the Mini DVR when the live video feed can be seen. Press ESC to end the recording. To take a photograph simply press the power button once (allow 5 seconds between photo's).

Further guidance on using the Mini DVR system correctly is provided in the TC 7 operating manual and online at [www.lancelab.com](http://www.lancelab.com).



**Charging the Mini DVR**




\*Charge times are approximate for a flat battery scenario.

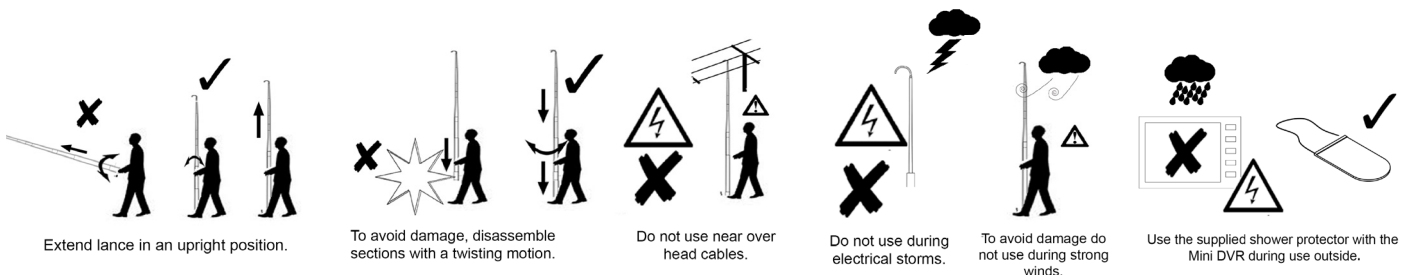
**Transferring Files to a PC**

1. Ensure the battery and required Micro SD® card are fitted in to the Mini DVR.
2. Turn the PC on.
3. Connect the Mini DVR to the USB socket of a PC using the supplied cable. Do not use extension cables or USB hubs as the Mini DVR may not communicate correctly with the PC. Ensure the USB cable is pushed firmly into both sockets.
4. No drivers should be required in order to access the files on the Micro SD® card, locate the drive and drag and drop files into the required directory.
5. Delete the files stored on the Micro SD® card to free space for further recordings and unplug USB cable once communications complete.

**Do not format the Micro SD® card on the PC.**

 **Do not disconnect the USB cable or change Micro SD® card when the Mini DVR is communicating with the PC. If the cable is disconnected during communication data loss will be caused.**

**Safety Information**



 **Please observe the safety information provided in the TC 7 operating manual to avoid injury, loss of life and damaged equipment.**